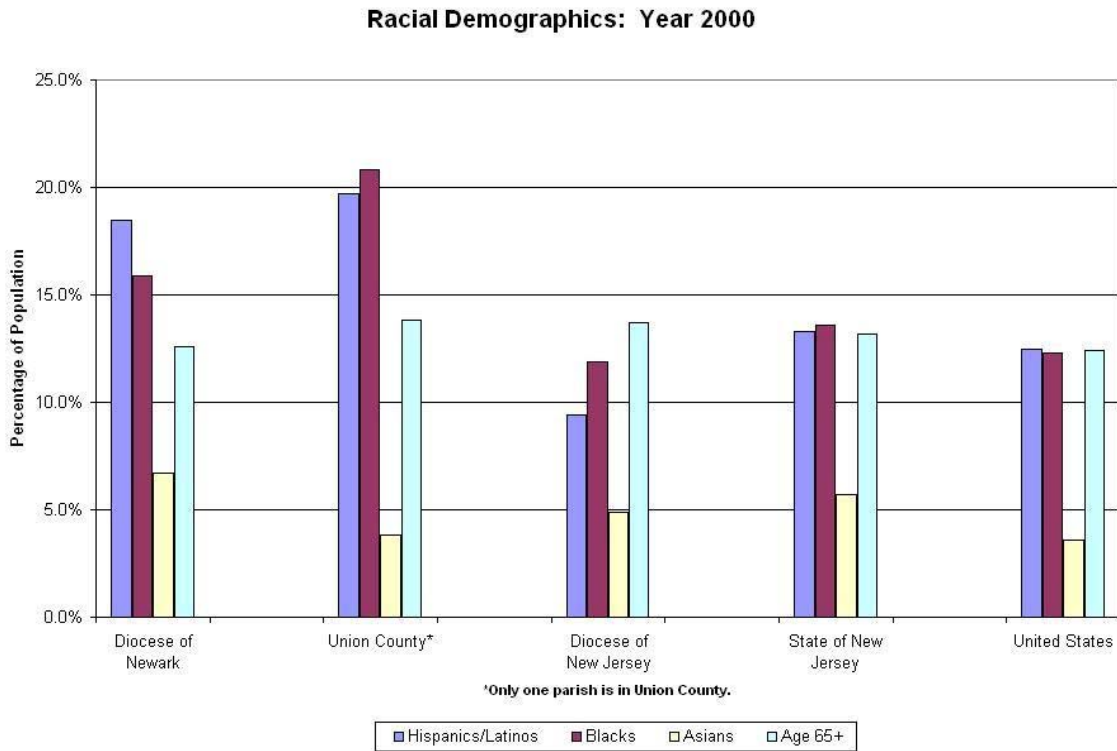


Demographic and Statistical Information

About The Diocese of Newark

The Diocese is racially diverse. On a percentage basis, there are more Hispanics/Latinos, Blacks, and Asians in the Diocese of Newark than there are in the Diocese of New Jersey, the state of New Jersey, or the United States.

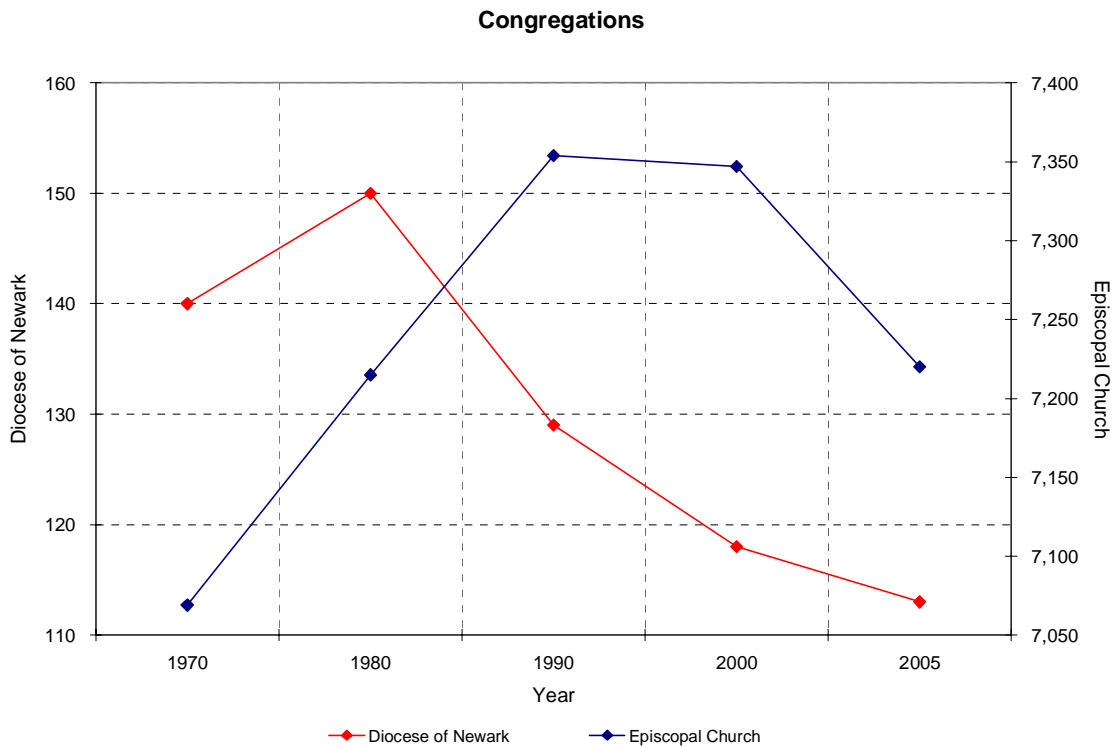


There are 113 congregations in the Diocese. The race of the priests which oversee these congregations is as follows:

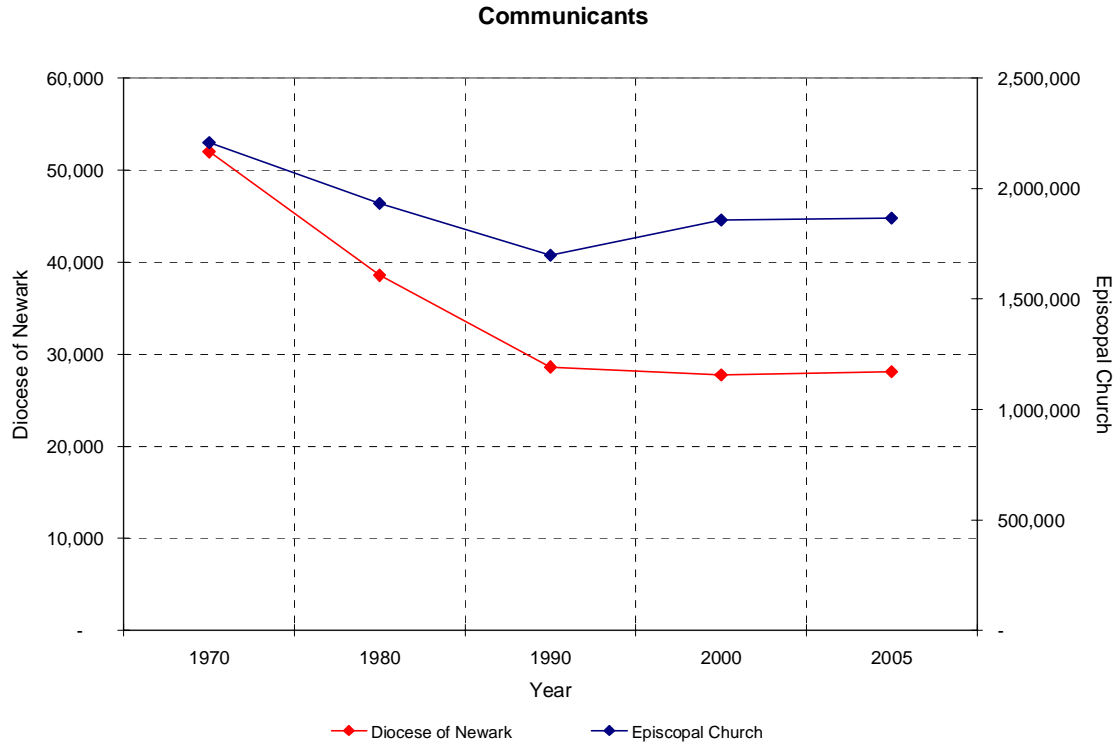
<u>Race</u>	<u>No.</u>
White	92
African and African-American	6
Hispanic/Latino	2
Guyanese	2
Asian Indian	2
Jamaican	1
Korean	1
Native American	1
Vacant	6

No statistics exist regarding the racial make-up of lay members in the Diocese.

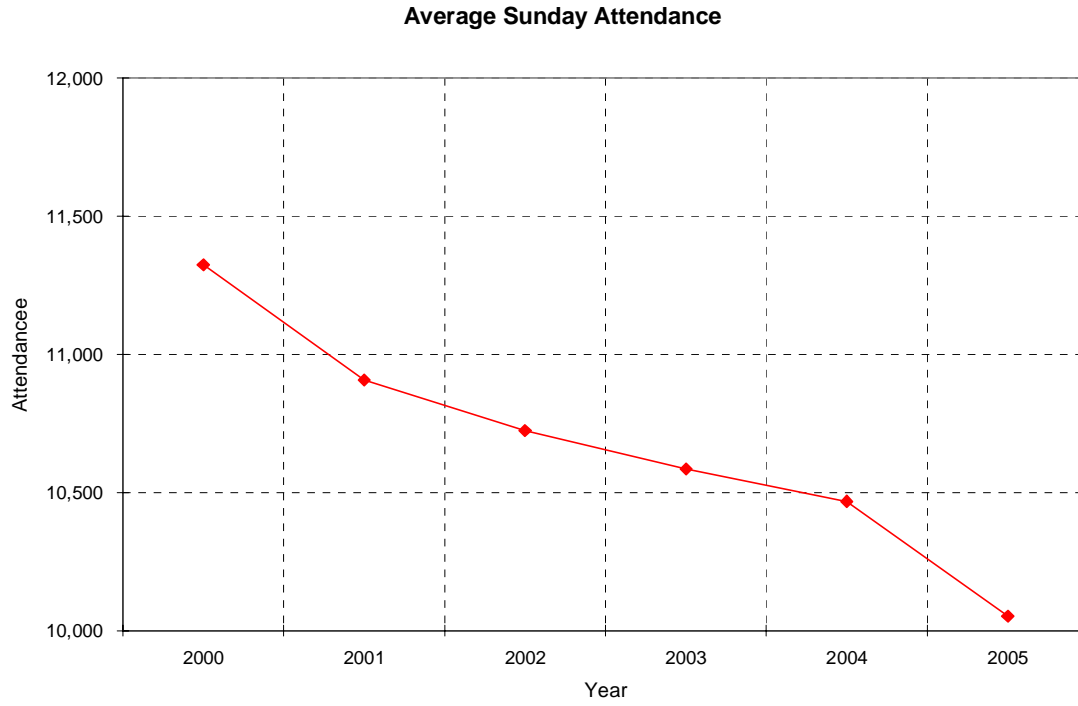
The number of congregations in the Diocese has decreased since 1990:



At the same time, the number of communicants increased from 1990 until 2000 and has remained relatively stable through 2003.



However, the Average Sunday Attendance has declined 11.8% since 2000 (an average annual decrease of 2.4%).



On a positive note, pledge income has increased 11.5% from 2000 to 2004, an average annual increase of 2.9%.

